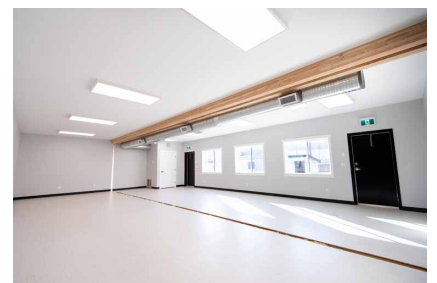
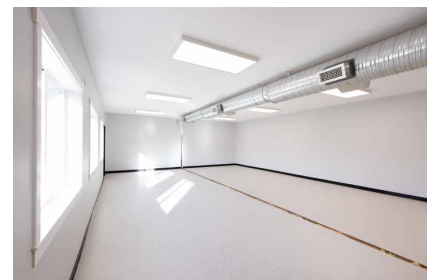
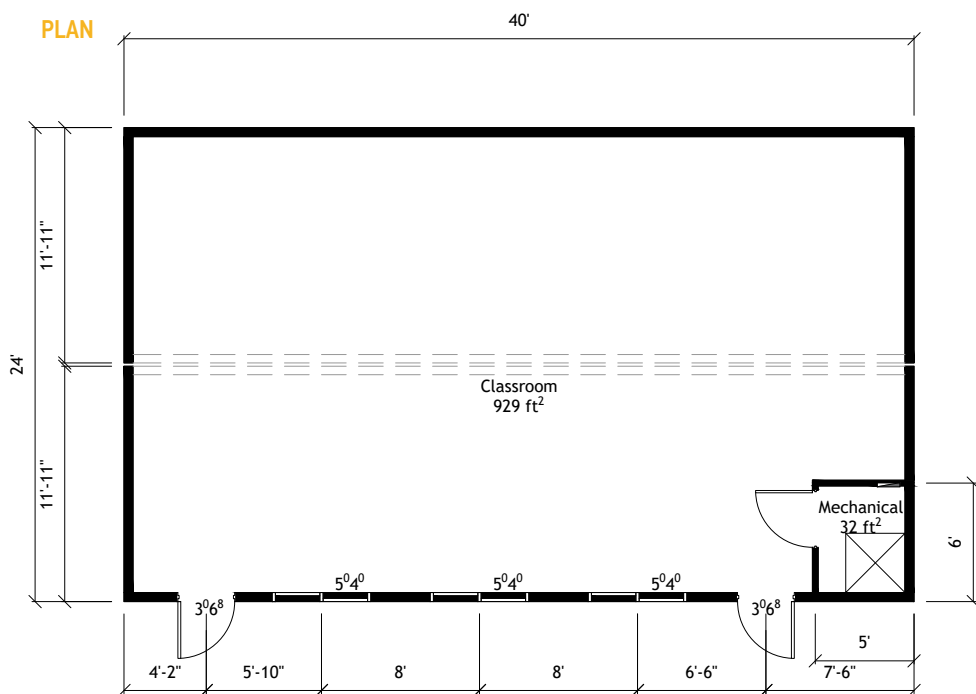


# 24' x 40' Classroom

**MAIN FLOOR**  
**960 sq.ft.**

**OVERALL**  
**24' x 40'**

*A straightforward, modern classroom that fits in anywhere. Available now for installation anywhere in BC.*



# 24' x 40' Classroom

## General Specifications

### EXTERIOR SIDING

7/8" Corrugated Tin; 2 tone: Charcoal & Copper; black trims

### INTERIOR WALLS

Tape and filled 5/8" drywall, painted to suit

### WINDOWS

5' x 4' Horizontal Slider; comes with insect screens; black exterior vinyl

### EXTERIOR DOORS

Hollow metal insulated door, black; comes with passage set and deadbolt

### PARTITION

Hollow core, prefinished white; comes with passage set

### ROOF

EPDM rubber membrane; black; 100 PSI snow load; white termination bar

### FLOOR

Vinyl sheet flooring

### CEILING

Tape and filled 5/8" drywall, white

### HEATING/COOLING

Electric up-flow furnace; exposed venting; A/C available upon request; gas fired options

### LIGHTING

LED 2' x 4' flat panels; LED fixtures above doors

### ELECTRICAL

120/240 volt single phase; 200 amp service; duplex wall receptacles; tel/data conduits and patch panel installed; jacks and wiring not included

### FIRE ALARM

Conduit and boxes included; wiring to be installed by client

### PLUMBING

None

**BUILT IN ACCORDANCE  
WITH CSA A277**

