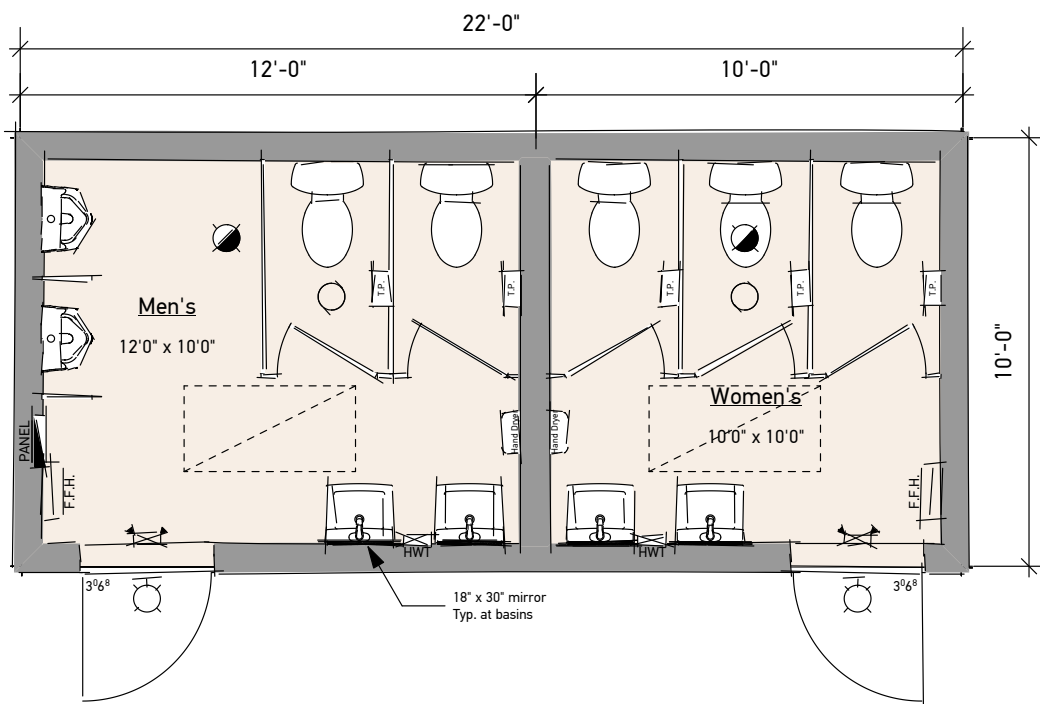


10' x 22'

Washroom Facility

A compact yet highly functional washroom building for wherever additional facilities are required. An optional "Universal" model adds additional capacity and amenities.



FLOORPLAN

TOTAL AREA
220 SQ.FT.

OVERALL
10' x 22' x 11'7"

FOR MORE INFORMATION:

250-753-8550

sales@cipmodular.ca

1868 Fielding Road
Nanaimo, BC V9X 1T5



10' x 22'

Washroom Facility

General Specifications

EXTERIOR SIDING

7/8" Corrugated Tin; 2 tone: Charcoal & Copper;
black trims

INTERIOR WALLS

Tape and filled 5/8" drywall: Metro Grey
Wainscotting options available

EXTERIOR DOORS

36" x 80" Insulated Metal Door, black; comes
with Commercial Entry Set and Deadbolt;
Equipped with Grilles for Air Exchange

INTERIOR PARTITIONS

ASI Powder Coated Steel Partitions: Charcoal

ROOF

Black EPDM rubber membrane; c/w termination
bar

FLOOR

Tarkett Vinyl sheet flooring;
Tile options available

CEILING

Tape and filled 5/8" drywall: white

HEATING/COOLING

Electric wall fan heaters

LIGHTING

LED 2' x 4' flat panels;
Recessed LED pot lighting;
Exterior LED flood light

ELECTRICAL

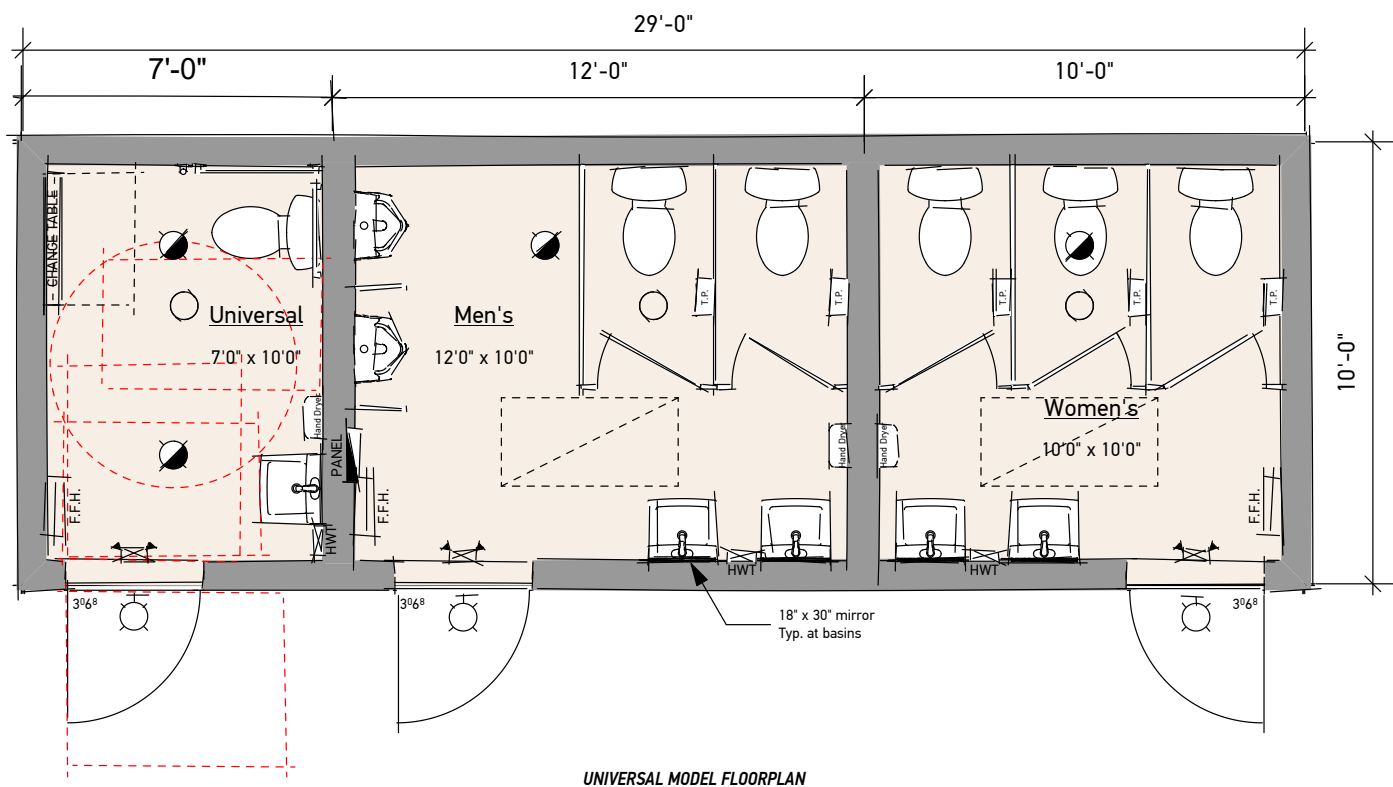
120/240 volt single phase; 100 amp service;
120/240 volt single phase; 150 amp service for
universal model;
Duplex wall receptacles;
Electric POU hot water heaters

PLUMBING

American Standard Cadet Pro toilet;
American Standard Declyn wall-hung lavatories;
Washbrook universal urinals;
All equipped with manual controls; automatic
options available

ACCESSORIES

ULINE automatic hand soap dispensers;
Dyson Airblade V hand dryers;
ULINE toilet paper dispensers;
18" x 30" mirrors;
Moen peened grab bars (Universal model)



UNIVERSAL MODEL FLOORPLAN



