

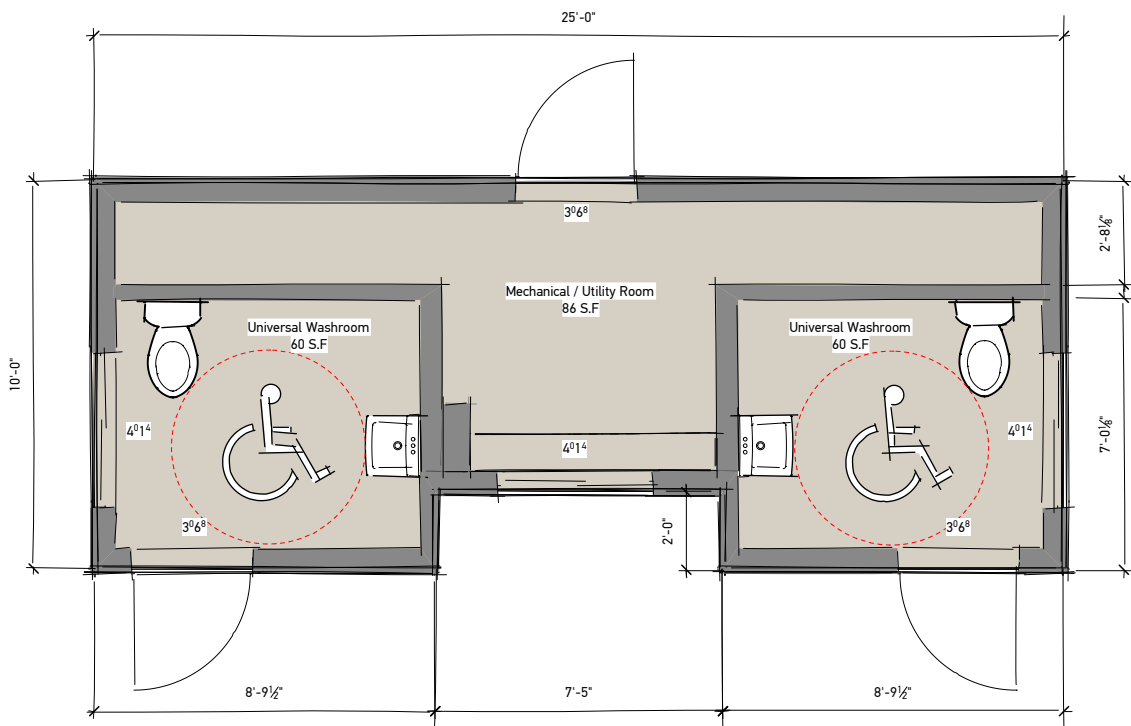
The “Joan”

10' x 25' Washcar

F002

A washcar featuring two spacious washrooms and wrapped in a durable cedar siding that gives the unit a rustic west-coast charm.

This washcar functions as a self contained unit. With storage for Janitorial supplies or equipment when hauling supplies to a remote location would be troublesome.



FLOORPLAN

TOTAL AREA
235 SQ.FT.

OVERALL
10' x 25' x 11'9"

FOR MORE INFORMATION:

250-753-8550

sales@cipmodular.ca

1868 Fielding Road
Nanaimo, BC V9X 1T5



The “Joan”

10' x 25' Washcar

F002

General Specifications

EXTERIOR SIDING

Cedar board and batten siding w/
Cedar shakes; black trims

INTERIOR WALLS

Tape and filled 5/8" drywall, Metro Grey

WINDOWS

4' x 1'6" frosted crank windows; includes insect
screens; white interior, black exterior vinyl

EXTERIOR DOORS

36" Hollow metal insulated door, black; comes
with passage set and deadbolt

PARTITION

36" Hollow core, prefinished white; comes with
passage set

ROOF

Slanted metal roof, grey; 40 PSI
snow load

FLOOR

Vinyl sheet flooring

CEILING

Tape and filled 5/8" drywall

HEATING/COOLING

Electric Panel Convactor Wall Heaters.

LIGHTING

LED Dual 6" Surface Mount LED's (Per Room)

ELECTRICAL

120/240 volt single phase; 100 amp service;
duplex wall receptacles.

FIRE ALARM

N/A

PLUMBING

American Standard *Declyn* Wall-Hung Lavatory
w/ Delta 4" Centerset *TUF-TECK* Faucets.

American Standard *Cadet Pro Right Height*
Elongated Toilet w/ Chrome finish trip lever

OPTIONAL AD ONS

Internal fresh water tank w/ pump
- Requires factory retrofit.

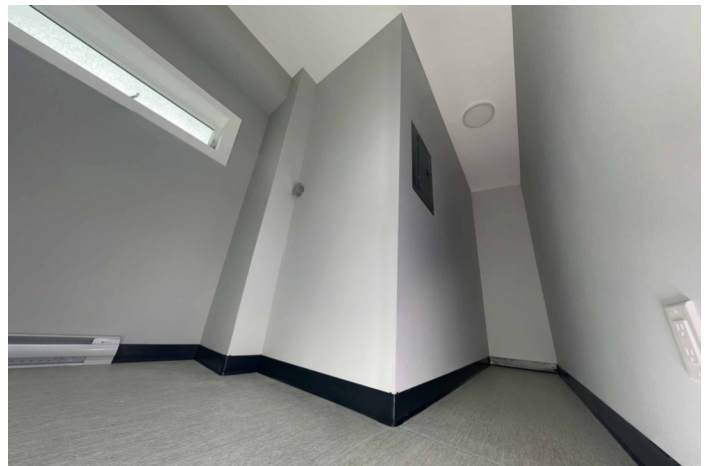
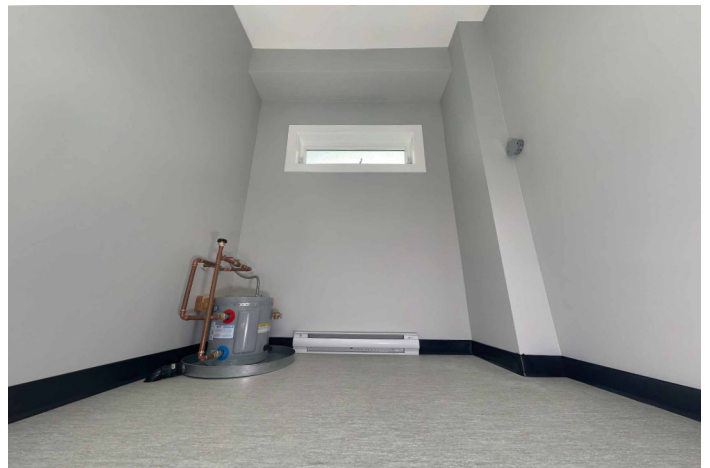
Internal sewer tank w/ pump
- Requires factory retrofit.

500 Gallon external insulated fresh water tank
w/ pump and heat traces.
- Installed on site.

500 Gallon internal Insulated sewer tank
w/ pump and heat traces.
- Installed on site.

The “Joan” 10’ x 25’ Washcar

F002



10' x 25' Cedar Washcar

F002

