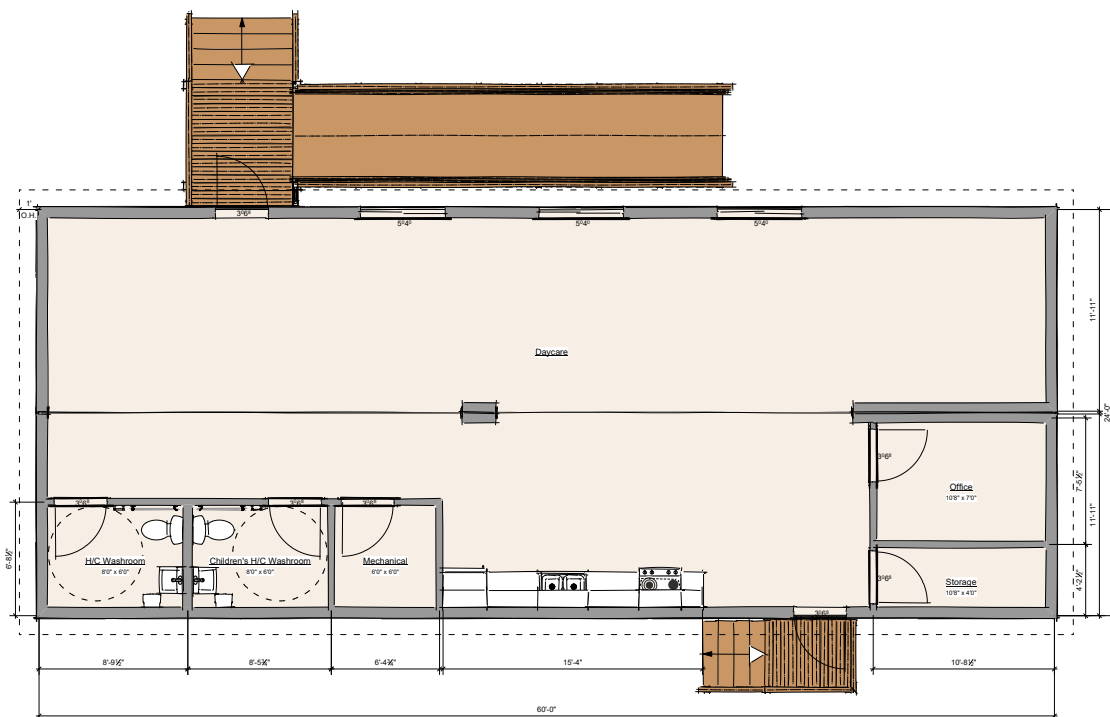


# 24' x 60' Daycare

*An open concept daycare with office, kitchenette, storage, and barrier-free washrooms in both adult and child-size.*



**TOTAL AREA**  
**1440 SQ.FT.**

**OVERALL**  
**24' x 60'**

**FOR MORE INFORMATION:**

250-753-8550

[sales@cipmodular.ca](mailto:sales@cipmodular.ca)

1868 Fielding Road  
Nanaimo, BC V9X 1T5

**FLOORPLAN**



# 24' x 60'

## Daycare

### General Specifications

**EXTERIOR SIDING**

7/8" Corrugated Tin; 2 tone: Charcoal & Copper; black trims

**INTERIOR WALLS**

Tape and filled 5/8" drywall, painted to suit

**WINDOWS**

5' x 4' Horizontal Slider; comes with insect screens; black exterior vinyl

**EXTERIOR DOORS**

Hollow metal insulated door, black; comes with passage set and deadbolt

**PARTITION**

Hollow core, prefinished white; comes with passage set

**ROOF**

EPDM rubber membrane; black; white termination bar

**FLOOR**

Vinyl sheet flooring

**CEILING**

Tape and filled 5/8" drywall

**HEATING/COOLING**

Electric up-flow furnace; exposed venting; optional A/C or heat pump available at additional cost

**LIGHTING**

GE LED 2' x 4' flat panels; Ortech recessed pot lights; exterior spot LED

**ELECTRICAL**

120/240 volt single phase; duplex wall receptacles; tel/data conduits and patch panel installed; jacks and wiring not included

**FIRE ALARM**

Fire alarm pull stations at exit doors; single buzzer; wiring not included

**PLUMBING**

Washrooms: toilet and sink typical; child-size for children's washroom; two H/C accessible spaces; comes with 50 gal. hot water tank;

Kitchen: stainless steel 2-bowl sink; faucet with pulldown sprayer; electric range; under cabinet range hood; refrigerator

**BUILT IN ACCORDANCE  
WITH CSA A277**



Intertek



Intertek

The above specifications are subject to change / customization.