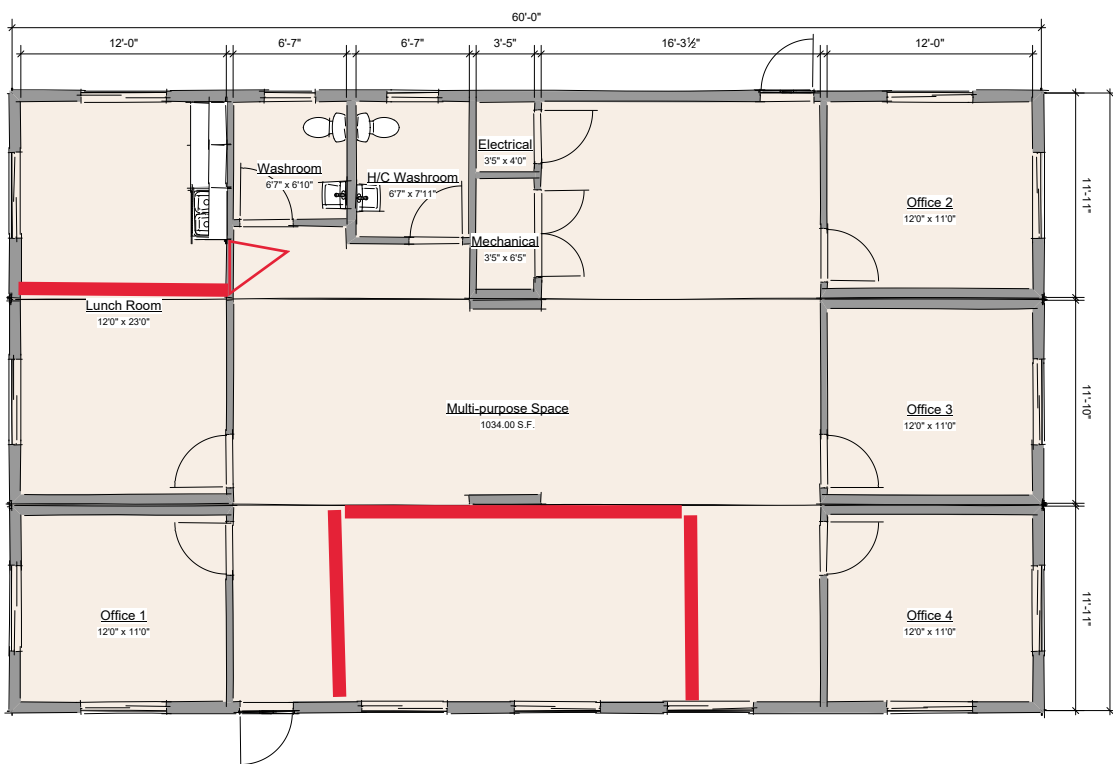


36' x 60' Office Complex

Bright and spacious, this triple-module office complex features 6 individual offices, as well as a large common area and 2 washrooms.



FLOORPLAN

TOTAL AREA
2160 SQ.FT.

OVERALL
36' x 60' x 11'7"

FOR MORE INFORMATION:

250-753-8550

sales@cipmodular.ca

1868 Fielding Road
Nanaimo, BC V9X 1T5



36' x 60' Office Complex

General Specifications

EXTERIOR SIDING

7/8" Corrugated Tin; 2 tone: Charcoal & Copper; black trims

INTERIOR WALLS

Tape and filled 5/8" drywall, painted to suit

WINDOWS

5' x 4' Horizontal Slider; comes with insect screens; black exterior vinyl

EXTERIOR DOORS

Hollow metal insulated door, black; comes with passage set and deadbolt

PARTITION

Hollow core, prefinished white; comes with passage set

ROOF

EPDM rubber membrane; black; 100 PSF snow load; white termination bar

FLOOR

Vinyl sheet flooring

CEILING

Tape and filled 5/8" drywall

HEATING/COOLING

Electric up-flow furnace; exposed venting; A/C available upon request

LIGHTING

LED 2' x 4' flat panels; LED low profile ring lights

ELECTRICAL

120/240 volt single phase; 200 amp service; duplex wall receptacles; tel/data conduits and patch panel installed; jacks and wiring not included

FIRE ALARM

N/A

PLUMBING

Washrooms: toilet and sink typical; one H/C accessible space; comes with 2 gal. hot water tank

**BUILT IN ACCORDANCE
WITH CSA A277**



The above specifications are subject to change / customization.



COMMON AREA



COMMON AREA



COMMON AREA



COMMON AREA



COMMON AREA



COMMON AREA



COMMON AREA



OFFICE



COMMON AREA



OFFICE



EXTERIOR WITH OPTIONAL DECK



OPTIONAL DECK



OFFICE



OFFICE



WASHROOM



WASHROOM



EXTERIOR WITH OPTIONAL DECK



OFFICE



LUNCH ROOM WITH KITCHENETTE



EXTERIOR WITH OPTIONAL STAIRS AND RAMP